



2025 - 2026

MURDISHAW WEST COMMUNITY **PRIMARY SCHOOL**

Barnfield Avenue,
Murdishaw
Runcorn
WA7 6EP

www.mwcp.co.uk
sec.murdishawwest@haltonlearning.net



CONTENTS



Page	Contents
3	Contact Details
4	Welcome
5	Our Values
6	Admissions
7	Our School Day
8	Wrap Around Care
9	Uniform
10	Enrichment
11	Pastoral Care and Behaviour
12	Attendance and Illness
13	School Food
15	Safeguarding
16	Reception Class
18	Special Educational Needs and Disabilities
19	Our Curriculum



CONTACT DETAILS

Address	Barnfield Avenue, Murdishaw, Runcorn, WA7 6EP
Telephone	01928 711254
Email	sec.murdishawwest@haltonlearning.net
Headteacher	Mrs Vanessa Edwards
Office Enquiries	Ms Caroline Telford
Chair of Governors	Mr Derek Cox
Ofsted Grading	Good - March 2023
Website	www.mwcp.co.uk
X	@MurdishawWest
Facebook	www.facebook.com/MurdishawWestCP
Instagram	Murdishaw_West

WELCOME MESSAGE



A warm welcome to Murdishaw West Community Primary School!

We are a community school based in Murdishaw, Runcorn. We aim to provide all children with inspirational learning experiences that ignite sparks within them. We strive to enable all our children to develop as curious, confident, articulate and happy individuals, who achieve personal academic excellence and are well-prepared for the next stage in their education and life in the wider world.

We are a popular, happy and friendly school, where children enjoy learning and are given every opportunity to develop their strengths. Our priority is to provide a safe, secure and stimulating environment, where children consistently feel valued and respected.



OUR VALUES

At Murdishaw West, we work together to.....

C
A
R
E

Collaborate - We work together as a team.

Achieve - We attend school and work hard to achieve our goals.

Respect - We are polite and considerate to others. We respect differences and welcome everyone.

Enjoy - We enjoy being at school.

At Murdishaw West, we CARE!



At Murdishaw West, we C.A.R.E!

These values are the bedrock of everything we do. They are the characteristics that we aim to foster in our pupils every day through our teaching and learning practice, so that by the time children leave our school, they will be confident, resilient, creative and responsible citizens.

OUR SCHOOL

Admission Arrangements

The school's Pupil Admission Number (PAN) is 30. Children are entitled to start school in the September following their fourth birthday and must start school by the beginning of the term after their fifth birthday. In line with Halton Borough Council procedures, the school has one intake for Reception children at the start of each academic year.

Admissions to the school are managed by Halton Borough Council.

Applications must be submitted by January for a place in September. Forms and information about admission criteria can be found at

[www.halton.gov.uk/schooladmissions.](http://www.halton.gov.uk/schooladmissions)

Parents thinking about deferring a child's start to school should initially contact the local authority admissions team for advice. Nevertheless, you will still be required to fill out the school admissions form, by the time your child turns 5.

After confirmation of your child's school place in April, you will be informed of your next steps – usually with an invite to meet the Early Years staff during a series of transition events, and to receive further information about the school and its procedures. To ease the children into school, they are invited to join us for a series of short visits in July.



Our School Day

Time	Infants (EYFS, Year 1 & 2)	Juniors (Year 3 - 6)
7:45am	Breakfast Club (fees apply)	
8:50am	Door opens and registration starts	Door opens and registration starts
9:00am	Doors & registration close	Doors & registration close
9:00am	Direct Teaching Time	Direct Teaching Time
10:40am	Break	Break
10:55am	Direct Teaching Time	Direct Teaching Time
11:55am	Lunch	
12:10pm		Lunch
12:55pm	Registration	Registration
1:00pm	Direct Teaching Time	Direct Teaching Time
3:20pm	End of School Day	End of School Day
3:30pm - 6pm	After School Wrap Around Care (fees apply)	



WRAP AROUND CARE

Breakfast Club & After School Club

Who runs our clubs?

Our Wrap Around Care is run, on site, by Murdishaw West Community Primary School staff.

Opening Times

Our Breakfast Club provides care for the children of Murdishaw West Community Primary School from **7.45 a.m. to 8.50 a.m costing just £1**

Our After School Club provides care from **3:20pm - 6pm.**

Short session 3:20pm - 4:30pm ONLY £5

Full session 3:20pm - 6:00pm ONLY £8 and includes a snack

How to Book Your Child's Place

You can book a place on the School Gateway App.

What do the clubs offer?

Qualified and experienced staff provide a weekly programme of events, including activities such as: art and craft, sports activities, baking, quizzes, outdoor play, stories and books. All activities are planned to be appropriate to the different ages and stages of development of the children who attend. Free play equipment is out for the session, to provide choice for the children.

A snack is included in each full session.

We can accept Universal Tax Credits and Childcare Vouchers.



MURDISHAW WEST PRIMARY SCHOOL
COLLABORATE • ACHIEVE • RESPECT • ENJOY

WRAP AROUND CHILDCARE

7:45AM - 8:50AM
and
3:20PM - 6PM

EARLY BIRD DEAL NOW AVAILABLE!

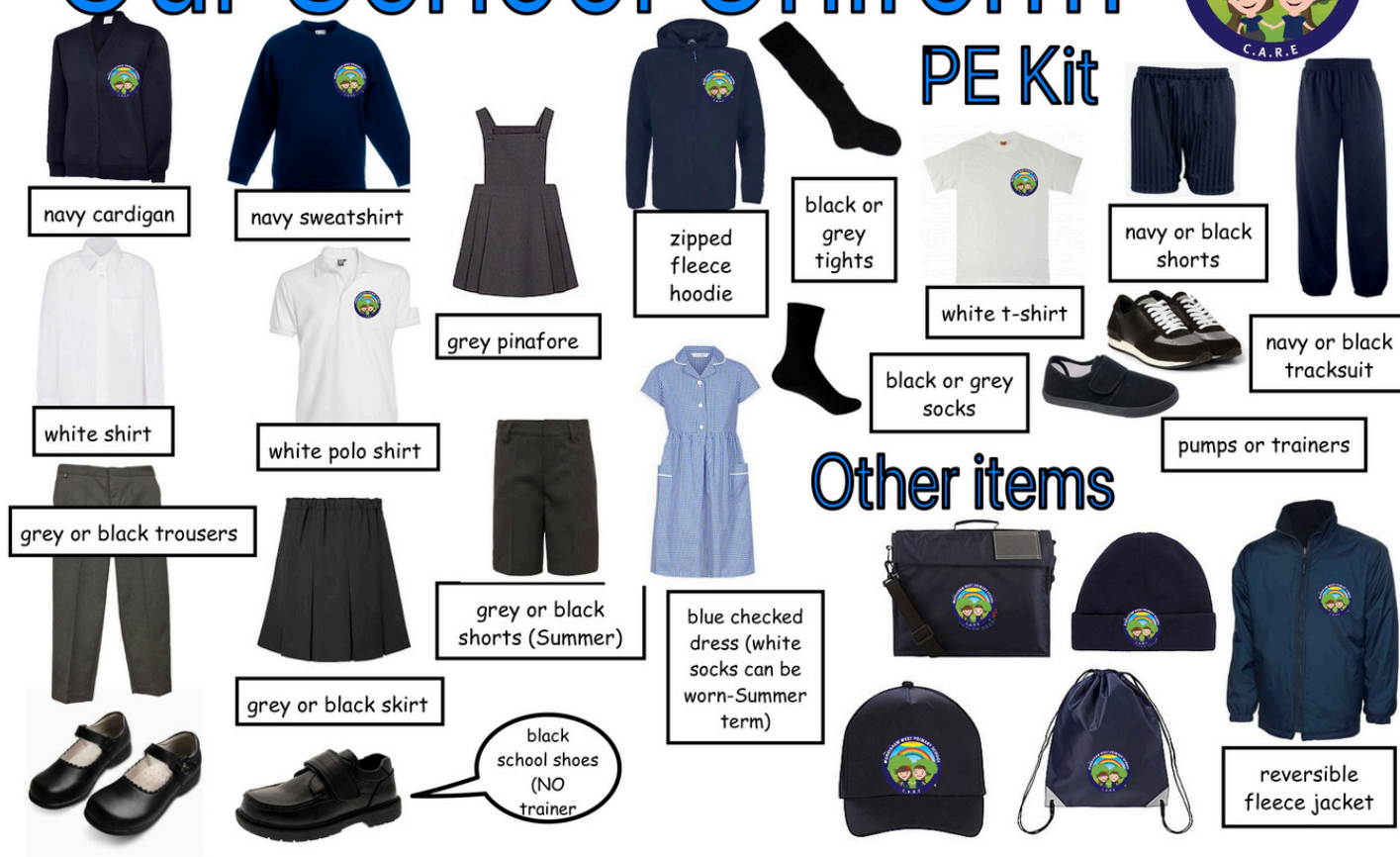
- 3:20pm - 4:30pm **ONLY £5**
- 3:20pm - 6pm **ONLY £8**
- **Childcare vouchers accepted**

 **EARLY BIRD OFFER**

 **01928 711254**  **www.mwcp.co.uk**



Our School Uniform



At Murdishaw West, all children are smartly dressed in school uniform that is appropriate for purpose and comfortable to wear.

We require children to have their hair tied back and out of their face to stop distractions from learning. We also ask that children do not come to school with nail varnish, fake nails or makeup on, and that jewellery must be kept to studs in ears only. Children must be able to remove these themselves for PE lessons.

Parents and carers can purchase branded jumpers and cardigans from our supplier, My Clothing. A link to this is on our school website, under the 'Parents' tab. Parents can also purchase uniform from our School Office (depending on stock). Contact our School Office for further advice or support.

Non-branded items can also be worn.



ENRICHMENT ACTIVITIES

FREE after school clubs

A comprehensive programme of FREE enrichment opportunities are offered, which include a range of sporting and non-sporting after school activities. Parents are given details about the activities taking place at the start of each term, and children have the opportunity to make selections. All bookings are made online. For safety reasons, some of the FREE clubs have limited places and may become over-subscribed. In this case we hold a reserve list. Once children have been allocated places for after school activities, we do expect them to make a commitment to attend every week.

School Trips

Trips and residentials enrich our curriculum by offering children unique learning experiences beyond the classroom. They build character, boost self-esteem, and bring lessons to life, helping children develop resilience, independence, and responsibility. Learning in real-world settings enhance understanding, engagement, and retention, making education more meaningful and memorable.



Pastoral Care

At Murdishaw West, we are committed to nurturing the well-being of our pupils through a strong pastoral system, that helps them to appreciate their individuality, build positive relationships, and grow into caring, capable members of society. Our dedicated pastoral team, including Family Support Worker (fsw@murdishawwest.co.uk), provides tailored support for children's social, emotional, mental, and physical needs. We create a safe, nurturing environment where children feel valued, parents feel reassured, and core values like friendship, kindness, and resilience are encouraged. Working closely with families, staff, and external agencies, we are able to offer guidance on issues such as self-esteem, bereavement, and anxiety, ensuring every child has the support they need to thrive. We are a Thrive Accredited School.

Behaviour

At Murdishaw West, we want everyone to feel safe, valued, happy, and secure. We believe that respect, kindness, and tolerance are key to creating a positive school environment, where children can learn and grow without disruption.

We encourage our children, staff, and families to work together to build a caring and supportive community. We help our pupils develop a strong sense of right and wrong, teach them to look after themselves, each other, and their surroundings. Our aim is to guide children towards self-control and self-regulation, helping them not just to follow the rules, but to truly thrive as learners and as individuals.

We believe that praise and encouragement are the best ways to promote positive behaviour. When children feel recognised and valued, their confidence grows, leading to better behaviour and a happier school experience. That's why we make sure all children understand the rules and routines, and we celebrate their successes at every opportunity.

Consistency, fairness, and clear expectations are the foundations of our approach to behaviour. If rules are broken, we always take action because we believe that every moment is a chance to learn and grow.

For more details, take a look at our comprehensive Behaviour Curriculum on our school website.



Attendance

We believe that good attendance is key to helping children reach their full potential. That's why we closely monitor attendance and punctuality, and if we have any concerns, we are here to support families. If a child's attendance falls below 95%, we will get in touch to see how we can help.

If your child is unwell and unable to come to school, please let the school office know before the start of the day. To keep everyone safe, we will contact parents if we haven't been informed about an absence.

We kindly ask that family holidays are planned during school breaks, so children don't miss out on valuable learning time. Changes to government regulations mean we can only approve leave of absence in exceptional circumstances—unfortunately, holidays do not count.

If you would like more information about our Attendance Policy, or need a Leave of Absence Form, just pop into the school office—we are happy to help!

Punctuality

School starts at 8:50am. Poor punctuality plays a significant role in disadvantaging any child, emotionally, socially and academically. We place great emphasis on punctuality, encouraging and expecting all children to arrive at school on time. Missing valuable learning opportunities not only places the child at a disadvantage, but also disrupts the class teaching.

Late marks will be recorded for those children who arrive after the start of the school day.

Sickness in School/Infectious Illnesses

We understand that children occasionally become unwell during the school day. If this happens, we will contact parents or a nominated adult to arrange for the child to be taken home.

If your child needs to stay home due to illness, please notify the school of the reason for their absence by 9:30 a.m. on the first day of the unplanned absence by calling us on 01928 711 254 or emailing the school office at sec.murdishawwest@haltonlearning.net.

Medical Appointments

To avoid an absence mark, we urge parents to make medical appointments for the end of the afternoon. If your child needs to leave the school for a medical appointment, the school must be informed in advance and the appointment card or letter shown to the school office.

All children leaving the school during the school day must be collected by an adult.



Safety and Security

The school gates open at 8.30am and are locked again at 9.00am. All children from EYFS to Year 4 must be brought onto the playground by an adult and supervised until they enter the building.

At the end of the school day, the gates are opened again at 3.10pm. Parents should wait on the school playground by their child's exit. Children will be dismissed once a known adult arrives. Children from Year 5 and 6 are allowed to walk home on their own, as long as their parent or carer have given consent. Parents must inform the school if a different adult will be collecting their child, otherwise we will be unable to release them.

When the school gates have been locked at the start and end of the school day, access can only be gained through the main entrance by the school office. All parents are asked not to park in the school car park unless they are dropping off or picking up from our Breakfast Club or After School Club. This ensures the car park remains safe and accessible for those who need it most.

School Food

At Murdishaw West, we believe proper nutrition and hydration are essential for children to thrive in learning. We are committed to fostering lifelong healthy eating and drinking habits in a happy, secure, and stimulating environment.

We teach children about their growing bodies, and what it means to be healthy, equipping them with the knowledge to make informed choices both at school and home. The whole school community plays a role in promoting healthy habits, and we aim to provide a pleasant, sociable dining experience that supports social development.

Water is easily accessible throughout the day, and we encourage regular fluid intake. We also accommodate dietary needs (including allergies, intolerances, and cultural or religious practices) while maintaining high hygiene standards. Parents are encouraged to support healthy eating and drinking habits, with nutritional advice available to those who need it. We actively promote free school meals for all EYFS and KS1 children, ensuring every child feels safe and comfortable with our menus and food choices. We are proud to be a NUT-FREE SCHOOL.

Breakfast

Breakfast is an important meal that supports children to be ready to learn at the start of each day. The school runs a daily breakfast club from 7:45am for a small fee. We also offer a FREE toast/bagel bar outside each classroom. This is supplied through [Magic Breakfast](#).



Snacks

EYFS and KS1 (year 1 and 2) children will have access to fruit and vegetables everyday as part of the Government's School Fruit and Vegetable Scheme. As children move up into KS2, if they wish to have a break time snack, they can purchase toast and milk from school or alternatively they can bring in a healthy snack:

- fruit
- dried fruit
- vegetables

Lunch

School meals are served between 11:50pm and 12:50pm in the hall. School meals meet the mandatory requirements of the School Food Standards 2015. School menus are planned on a 3 week cycle and always contain a vegetarian option. The school meals menu can be found on our school website and is regularly shared on our social media pages.

School meals offer a selection of freshly cooked main meals and desserts every day, often including pasta, baked potatoes, sandwiches, salad, fresh fruit and yoghurt.

All meals need to be booked and paid for in advance on the School Meal Hub.

You are welcome to provide your child with a packed lunch. Please do not include fizzy drinks or foods containing nuts.

Drinks

In accordance with our status as a Healthy School, children are actively encouraged to drink water, throughout the school day. To support this, all children are encouraged to bring a water bottle to school filled with fresh water. These bottles may only contain plain/unflavoured/uncoloured water. Fizzy drinks should not be brought to school. If your child is reluctant to drink water, our trained staff can support you .

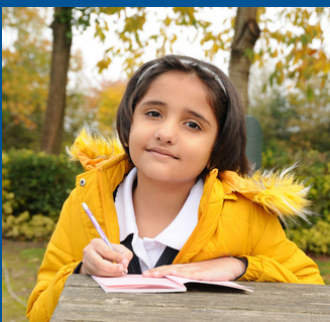
Cycling or Scooting to School

Parents may choose to cycle to school with their children – we have bike racks for your use, where bicycles and scooters can be stored during the school day. These are left at your own risk.

For children's safety, all children cycling to school must wear a helmet when riding bikes and scooters. Bikes / scooters must be dismounted and pushed on to the school site.

Dogs

With the exception of guide dogs, dogs are strictly not allowed on to the school site. Parents are requested not to walk dogs through the congested pavements or tie them to the school railings.



Emergency Information

At the start of each year, parents are asked to check the information we hold in relation to their child. It is of vital importance that the school is informed of any changes throughout the year, to ensure that we can contact parents if their child is unwell or has had an accident.

Safeguarding & Child Protection

Safeguarding is the action that is taken to promote the welfare of children and protect them from harm.

Safeguarding means:

- protecting children from abuse and maltreatment
- preventing harm to children's health or development
- ensuring children grow up with the provision of safe and effective care
- taking action to enable all children and young people to have the best outcomes.

Safeguarding children and child protection guidance and legislation applies to all children up to the age of 18.

Our staff and governors have been trained in safeguarding in line with the the KEEPING CHILDREN SAFE IN EDUCATION document and have also taken part in 'PREVENT' training.

The day-to-day contact with children places school staff in a position to observe outward signs of abuse, changes in behaviour or a failure to develop and for children to make a disclosure or talk to about their worries. Parents should be aware that if a member of staff has a concern about a child, the school is required, as part of Halton Borough Council Safeguarding procedures, to discuss its concerns with the Children's Social Care.

At our school, we work with Operation Encompass, a partnership between police and education services that supports children affected by domestic abuse. When police attend an incident, they share relevant information with our designated safeguarding lead (DSL) before the next school day. This enables us to offer timely and appropriate support to help the child feel safe, secure, and ready to learn. By working together, we aim to reduce the emotional impact of domestic abuse and ensure each child has the best possible start to their day.

Senior Designated Safeguarding Officer: Mrs V. Edwards

Deputy Designated Safeguarding Officer: Mrs J. Phillips

Home / School Liaison

Parents are invited to Autumn and Spring Term Parents' Evenings to discuss their child's progress with the class teacher. Occasionally, it may be necessary to ask to see parents in between those meetings, if we have a particular concern. If you have any concerns or worries, you are encouraged to talk them through with the class teacher to avoid a problem escalating and unsettling your child. In the Summer Term, you will receive a written end of year report which informs you of your child's progress and strengths in more detail. A list of events for the term is sent out to parents at the start of the term – you are asked to make a note of any relevant dates. In addition, parents receive letters and newsletters on a regular basis. These are all available on the school website and social media accounts.



EARLY YEARS (EYFS) RECEPTION CLASS

At Murdishaw West School, we believe that a high quality early years experience in school is of vital importance and can have a lasting effect on a child's attitudes to education, attainments, and personal and social skill development.

The transition to full time education is quite a big step for some children, and sometimes for parents too. First days at school for young children are a mixture of emotions. For some children, the school day and its demands can be quite daunting and, at first, very tiring. It is important that we ensure that children settle into the school routine as smoothly and as quickly as possible. As part of this settling in process, the children are invited to school for short visits, which helps them to gradually become familiar with the surroundings and new teachers. We can also work at your child's pace, with settling in periods ranging from 2 days to 2 weeks or more if required. The Reception Teacher visits most of the local nurseries and preschools to find out as much as possible about all the children joining us, to best support their transition to school.

Induction sessions are held for parents of the new intake, which outlines the induction process and gives adults a chance to meet the staff whilst finding out more about early education in general.

Throughout the year, parents are invited to contribute towards their child's learning through the use of Seesaw and regular school events.



Early Years Curriculum

At Murdishaw West, we believe in developing firm foundations that help our children succeed in their learning journey throughout school and beyond. We believe that all children deserve to be valued as individuals and we are passionate in supporting all children to achieve their full, unique potential.

Our Reception class follows the EYFS curriculum, which has seven main areas of learning.

Areas of Learning and Development

Prime Areas

Communication and Language

Listening, Attention and Understanding
Speaking

Personal, Social and Emotional Development

Self-Regulation
Managing Self
Building Relationships

Physical Development

Gross Motor Skills
Fine Motor Skills



Prime Areas

Literacy

Comprehension
Word Reading

Mathematics

Number
Numerical
Patterns

Understanding the World

Past and Present
People Culture and Communities
The Natural World

Expressive Art and Design

Creating with materials
Being Imaginative and Expressive

Our core values of Collaborate, Achieve, Respect and Enjoy, begin in EYFS. Our well planned topics have the flexibility to enable child initiated learning and the stimulating environments, both indoor and outdoor, provide rich and varied experiences. As a result, children grow into inquisitive learners with transferable personal skills, such as empathy and independence.

This safe and stimulating learning environment, coupled with highly skilled staff, ensures that children's personal needs and wellbeing are catered for. As a result, children settle quickly and are ready to learn early in the autumn term.

SPECIAL EDUCATIONAL NEEDS & DISABILITY

We are proud to be an inclusive school at Murdishaw West Community Primary School. Through regular monitoring and assessments, we ensure that we provide a secure, caring and happy environment in which all pupils can succeed.

Once a specific need has been identified, an individual SEND support plan will be created which will show how the school will help your child. This plan incorporates advice from specialist agencies, where appropriate, and will consider the best way to deliver the support. For example, this may be a mixture of in class support, one-to-one work with an adult out of class, special arrangements made for breaktimes, time spent with a counsellor or the provision of special equipment. The plan is shared and discussed with both you and your child and copies are sent home.

The provision is reviewed regularly to ensure that it is achieving the desired outcomes. The plan is not fixed and can be adapted as your child's needs develop and change over time. We encourage the children to evaluate the interventions we provide and we seek pupil views at key times, to ensure they understand the support and begin to recognise how it is helping them.

Our SENDCo works together with our class teachers to provide support across our school.



THE CURRICULUM

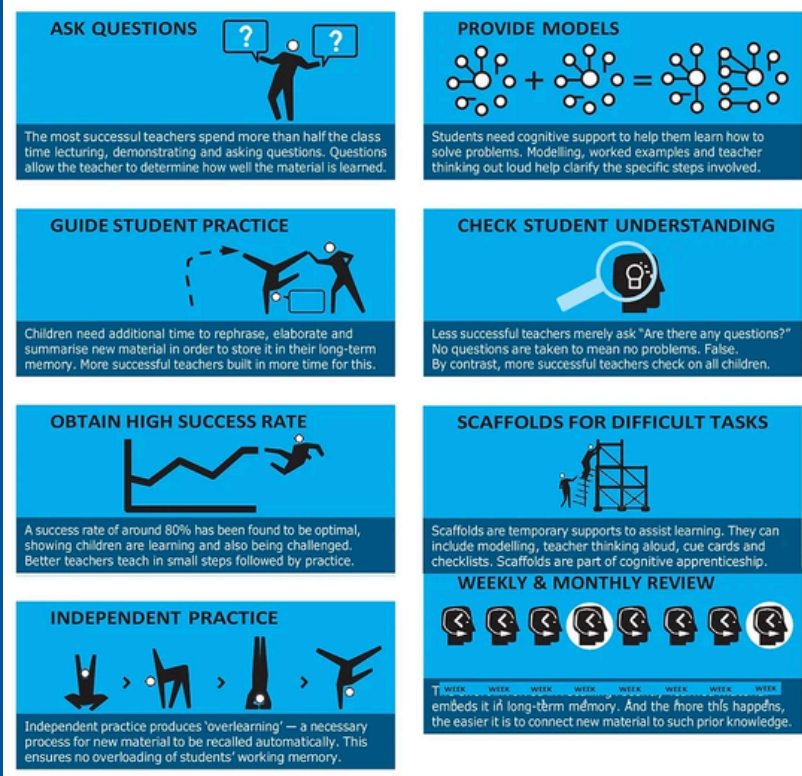
Murdishaw West Community Primary will strive continuously to improve the quality of teaching and learning for all its pupils. We will foster and develop a vibrant and self-improving teaching and learning community that recognises and values teacher professionalism. We will actively look to adapt, refine and improve our teaching approaches utilising best evidence from trusted external research, the context in which we work in.

We believe that teaching and learning encompasses a range of inter-linked activities and processes, namely:

- **Pedagogy: How we teach**
- **The curriculum: What is taught, knowledge and skills**
- **Assessment: How we know what has been understood and retained; IMPACT**

Our approach to teaching and learning is built around Rosenshine's Principles of Instruction. These define the key elements of effective practice. They are based around research, including cognitive load theory, and are designed to give direct links from research into practice.

Teachers at Murdishaw West...



Equal Opportunities and Inclusion

Our school offers full access to the curriculum to all children, regardless of gender, ethnicity, disability, or ability. We recognise our role in the prevention of disability, gender and racial stereotyping prejudice incorporating such learning into the curriculum.

Homework

Each day, children take reading books home to share with an adult. We suggest reading at home at least three times a week. Parents and carers are encouraged to participate in their child's reading development. Children who read daily at home tend to make greater progress compared to those who only read in school. Your child will bring home a selection of books to enjoy with family members. Additionally, children will have weekly homework that is suitable for their age to complete.

English

There are four main elements to the English curriculum - spoken language, reading, writing and grammar, punctuation and spelling. It is taught initially as a subject with the skills applied and developed further across the whole curriculum. English is taught through the study of a carefully selected set of age-appropriate real books that cover a range of genres.

Early Reading

We believe every child deserves reading success from the start. Learning to read early sets the foundation for greater success in school, so we place reading at the heart of our approach.

To ensure success, children are given books that match their phonic abilities using the Essential Letters and Sounds (ELS) programme. This systematic and consistent phonics programme is taught daily at 9:00am from Reception to Year 2. Our "keep up, not catch up" approach ensures most children participate in whole-class phonics lessons, with personalised support provided for those who need it.

Children at risk of falling behind receive additional daily teaching to reinforce the day's learning and address any challenges. ELS lessons follow clear, consistent routines to maximise learning and help children confidently apply their phonics knowledge to reading.

See our school website for more details.



Reading from Year 2 to Year 6

We use the Pathways to Read programme to deliver a mastery approach to English. High-quality texts and engaging reading opportunities help children in all year groups build and apply key reading skills through repetition and practice.

We offer whole-class, small-group and individual reading sessions. For children in Years 2–6 needing extra phonics support, we provide a tailored reading programme with phonically decodable texts. Shared and group reading sessions focus on mastering key skills, with follow-up tasks to demonstrate independent learning.

Our approach also emphasises expanding children’s vocabulary, building on our commitment to providing a rich and varied language experience.

Writing

In our writing lessons, we use the Pathways to Write programme from EYFS to Year 6 to guide our writing curriculum. Children explore various writing genres, learning their purpose, structure, and language features through rich reading experiences and quality texts that often serve as models for writing. We provide regular opportunities for children to plan, tell, retell, and refine texts as part of their preparation for writing. Teaching sequences include shared, guided, and independent writing, with teacher modeling and supported composition to ease the transition to independent work. Extended writing tasks are woven across the curriculum, encouraging creativity and the application of skills—like writing a narrative set in Ancient Egypt or explaining how a volcano erupts.

Mathematics

We believe every child deserves a creative and ambitious Maths curriculum, that builds skills and knowledge for everyday life. Our carefully planned curriculum ensures clear progression through small, manageable steps that build on prior learning.

Since 2014, we’ve embraced a mastery approach inspired by the success of Southeast Asian teaching methods. Using resources from White Rose Education, we focus on small steps to support understanding and adapt teaching to meet individual needs, ensuring all children succeed.

Our goal is to develop confident mathematicians who can recall and apply knowledge accurately, reason mathematically, and solve complex problems with fluency and confidence.

Science

Our Science curriculum sparks curiosity and wonder about the world while building the skills and knowledge needed to think scientifically. Children explore biology, chemistry, and physics, learning how science works and its impact on today’s world and the future.

We encourage children to ask questions, investigate, and solve problems, fostering independence and a love of learning. Specialist vocabulary is introduced and reinforced, and we focus on scientific enquiry, helping children use different approaches to answer meaningful questions. Our aim is to equip every child with the knowledge and skills to achieve their ambitions.





FOUNDATION SUBJECTS

COMPUTING, HISTORY, GEOGRAPHY, MODERN FOREIGN LANGUAGE, DESIGN TECHNOLOGY, ART, MUSIC, PHYSICAL EDUCATION, RELIGIOUS EDUCATION, PERSONAL, SOCIAL, HEALTH AND EDUCATION (PSHE)

Computing

At Murdishaw West, we aim for pupils to be masters of technology, using it positively, responsibly, and safely. Technology is everywhere, and we teach children to be creators, not just consumers, through a curriculum covering computer science, information technology, and digital literacy. We emphasise education as the best way to navigate the challenges of technology and social media, helping pupils make informed choices. Technology enhances learning, offering creative and accessible ways to demonstrate understanding.

By embedding computing across the curriculum, we encourage pupils to apply their knowledge creatively, becoming skilled computer scientists. By Upper Key Stage 2, our goal is for children to confidently choose the best tools for any task.

Modern Foreign Language

At Murdishaw West, we use the Language Angels scheme to deliver a vibrant and engaging Spanish curriculum. Our aim is to inspire pupils with exciting topics while setting high expectations to help them reach their full potential and encourage language learning beyond Key Stage 2.

We teach the four key language skills—listening, speaking, reading, and writing—alongside age-appropriate grammar. This builds strong foundations for future language learning and supports overall academic achievement.

Through learning Spanish, pupils develop curiosity about languages, a deeper understanding of other cultures, and a greater awareness of themselves and the world. Our goal is to foster lifelong language learners.

History

At Murdishaw West, we aim to provide an exciting, engaging and progressive History curriculum that provides children with a clear chronological narrative of the History of Britain and the wider world. We want to encourage the children to develop an interest in the past and an understanding that enables them to enjoy all that History has to offer. Our History curriculum will enable children to develop a context for their growing sense of identity. By nurturing children's natural curiosity and encouraging them to form and ask their own questions, we aim to help develop the skills of enquiry, investigation, analysis, evaluation and presentation within the children.

Geography

At Murdishaw West, we aim to provide a relevant, engaging Geography curriculum that broadens children's horizons by exposing them to the world beyond Murdishaw. We believe that Geography helps to provoke and provide answers to questions about the natural and human aspects of the world. We aim to stimulate pupil's interest in the world around them and to foster a sense of place, space and wonder at the world around them. We want our children to care about the world in which we all live and to develop an informed concern for the quality of the environment. We aim to develop in children the skills of enquiry, investigation, analysis, evaluation and presentation.

Art & Design

We believe Art and Design is a vital part of education, inspiring creativity and self-expression while enriching our curriculum. Through a high-quality programme, children gain the skills and knowledge to experiment, invent, and create their own art, expressing individuality and imagination. We encourage pupils to see themselves as artists, appreciate diverse cultures, and understand how art reflects and shapes history and society. They will explore the work of significant artists, designers, and craftspeople, developing critical awareness and a deeper understanding of art's purpose and impact over time.

Design & Technology

At Murdishaw West, we know how much children love the hands-on creativity of Design and Technology. Our curriculum nurtures their excitement by teaching them to design and create functional products they can be proud of.

We focus on building skills and knowledge in materials, mechanisms, structures, and safety, while encouraging creativity, innovation, and problem-solving. Children also learn about sustainability and enterprise, helping them think critically about the world around them.

Our projects follow three key stages: investigating and evaluating existing products, developing skills (e.g., stitching or using tools), and designing and making purposeful creations. This process helps children produce work they are proud to share.

Music

At Murdishaw West Community Primary, we believe the involvement of musical related activities across the curriculum supports a child to achieve a higher level of vocabulary, communication and success in their school experience and later on in life. Research has shown that listening to music can reduce anxiety, blood pressure and pain, as well as improve sleep quality, mood, mental alertness, and memory. We also believe that music embodies the highest form of human creativity alongside the arts and gives rise to this in others. Therefore, at Murdishaw West, music is highly celebrated and embraced.



Physical Education

PE at Murdishaw West aims to build knowledge, skills, and confidence in physical activities while promoting a healthy lifestyle. Our broad, creative programme challenges and stimulates pupils of all abilities in a safe, supportive environment. We focus on developing individual potential, fostering physical competence, encouraging participation, and helping children appreciate creative performance. Through our curriculum, we build interpersonal skills, boost self-esteem, and ensure safety in PE and sport. We are thrilled to announce that Murdishaw West has achieved the School Games Award for our outstanding PE and sports provision. This national award, launched by the Youth Sport Trust, celebrates schools excelling in keeping young people active and engaged in sport. We're proud of our pupils' dedication and our commitment to providing positive experiences for all students, especially those new to sport or needing extra support.

Religious Education

At Murdishaw West, our Religious Education (RE) curriculum is designed to nurture resilient, accepting, mindful, and inquisitive learners. Through exploring world religions, we help children understand different beliefs, connect with their own values, and ask meaningful questions about the world. We deliver engaging lessons that build on prior learning, encourage creativity, and promote progression. Our curriculum reflects our local community, embracing diversity and recognising places of worship. By fostering inclusivity and self-confidence, we celebrate each child's uniqueness and encourage tolerance. Through inquiry-based learning, we help children develop cultural awareness and a deeper understanding of others.

Spiritual Moral Social Cultural and British Values

At Murdishaw West, we embed British Values across our curriculum, helping children develop spiritually, morally, socially, and culturally. We encourage reflection on beliefs, experiences, and life's big questions while fostering curiosity and creativity. Children learn to distinguish right from wrong, consider the impact of their actions, and respect different perspectives. Through collaboration and interaction with diverse communities, they embrace British Values and contribute positively to society. Our curriculum promotes inclusivity, challenges stereotypes, and encourages participation in artistic, sporting, and cultural activities. Through discussions, assemblies, workshops, and lessons, children engage with democracy, the rule of law, individual liberty, mutual respect, and tolerance, preparing them for life in modern Britain.

PSHE, Sex & Relationships Education

At Murdishaw West Primary School, PSHE and Learning for Life (including statutory Relationship, Sex, and Health Education) are central to developing confident, healthy, and responsible children. Our curriculum nurtures the whole child—intellectually, morally, socially, and spiritually—preparing them for life now and in the future.

Following the PSHE Association Programme of Study, we focus on emotional literacy, resilience, and mental and physical well-being. In our ever-changing world, we equip children with the skills to understand diversity and contribute positively to their school and community. At the heart of our PSHE teaching are our Core Values: Collaborate, Achieve, Respect, Enjoy.





MURDISHAW WEST COMMUNITY **PRIMARY SCHOOL**



COLLABORATE
ACHIEVE
RESPECT
ENJOY